

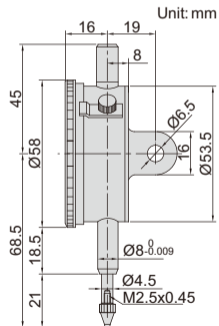
## DIAL INDICATORS (STANDARD MODEL)



2308-10A

- Meet DIN878
- Jeweled bearing
- Supplied with limit pointers and bezel clamp
- Optional accessory: backs (page 104~105), contact points (page 102~103)

Code	Range	Graduation	Accuracy	Hysteresis	Range/rev	Dial reading	Remark
2308-3FA*	3mm	0.01mm	14μm	3μm	1mm	0-100	flat back
2308-5FA*	5mm	0.01mm	16μm	3μm	1mm	0-100	flat back
2308-10FA*	10mm	0.01mm	17μm	3μm	1mm	0-100	flat back
2308-3A*	3mm	0.01mm	14μm	3μm	1mm	0-100	lug back
2308-5A*	5mm	0.01mm	16μm	3μm	1mm	0-100	lug back
2308-10A*	10mm	0.01mm	17μm	3μm	1mm	0-100	lug back



\* Supplied with manufacturer inspection certificate traceable to NIST USA